



# MONTHLY MEMBERSHIP PROGRESS REPORT

District 7 N

Results as of: 5/31/2017

GMT: HAL GRIFFIN

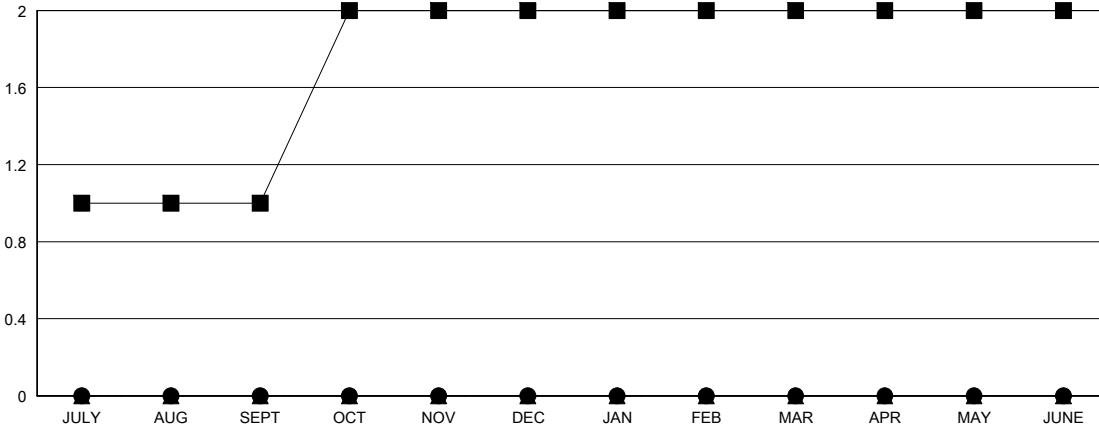
LOCATION ARKANSAS

GMT CA

Clubs			
RESULTS FOR 2016-2017			
QUARTER	NEW CLUB GOAL	NEW CLUBS	DROPPED CLUBS
JULY/AUG/SEPT	1	0	0
OCT/NOV/DEC	1	0	1
JAN/FEB/MAR	0	0	0
APR/MAY/JUNE	0	0	0

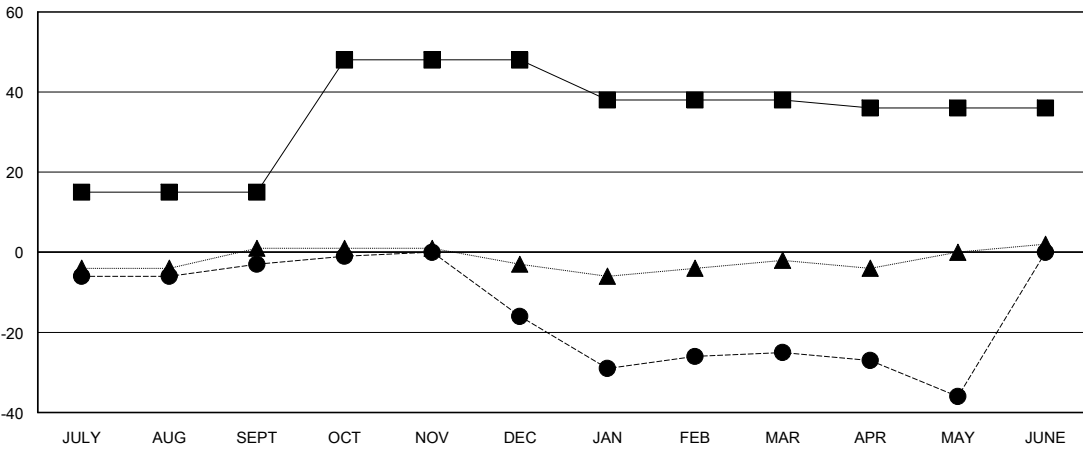
Members			
RESULTS FOR 2016-2017			
QUARTER	NEW MEMBER GROWTH NET GOAL (not reinstated or transfers)	NEW MEMBER GROWTH ACTUAL (not reinstated or transfers)	DROPPED MEMBERS ACTUAL (including transfers)
JULY/AUG/SEPT	15	13	16
OCT/NOV/DEC	33	11	24
JAN/FEB/MAR	-10	19	28
APR/MAY/JUNE	-2	7	18

GOALS AND ACTUAL NEW CLUBS CUMULATIVE



- - CURRENT YEAR GOALS FOR NEW CLUBS
- - CURRENT YEAR ACTUAL NEW CLUBS
- ▲ - LAST YEAR ACTUAL NEW CLUBS

GOALS AND ACTUAL MEMBERS CUMULATIVE



- - NEW MEMBER GROWTH NET GOAL
- - NEW MEMBER GROWTH ACTUAL
- ▲ - LAST YEAR MEMBERSHIP ACTUAL

DROPPED CLUBS: 1	
DROPPED MEMBERS	
DECEASED	8
CLUB CANCELLED	9
OTHER	69
<b>TOTAL</b>	<b>86</b>

20 CLUBS OF 34 ADDED 1 OR MORE NEW MEMBERS

[CLICK HERE FOR CUMULATIVE MEMBERSHIP DATA](#)

<u>GENDER DISTRIBUTION</u>	
MALE	443 (61.79%)
FEMALE	274 (38.21%)
TOTAL FAMILY UNIT MEMBERS	156
FAMILY MEMBERS PAYING HALF DUES	79